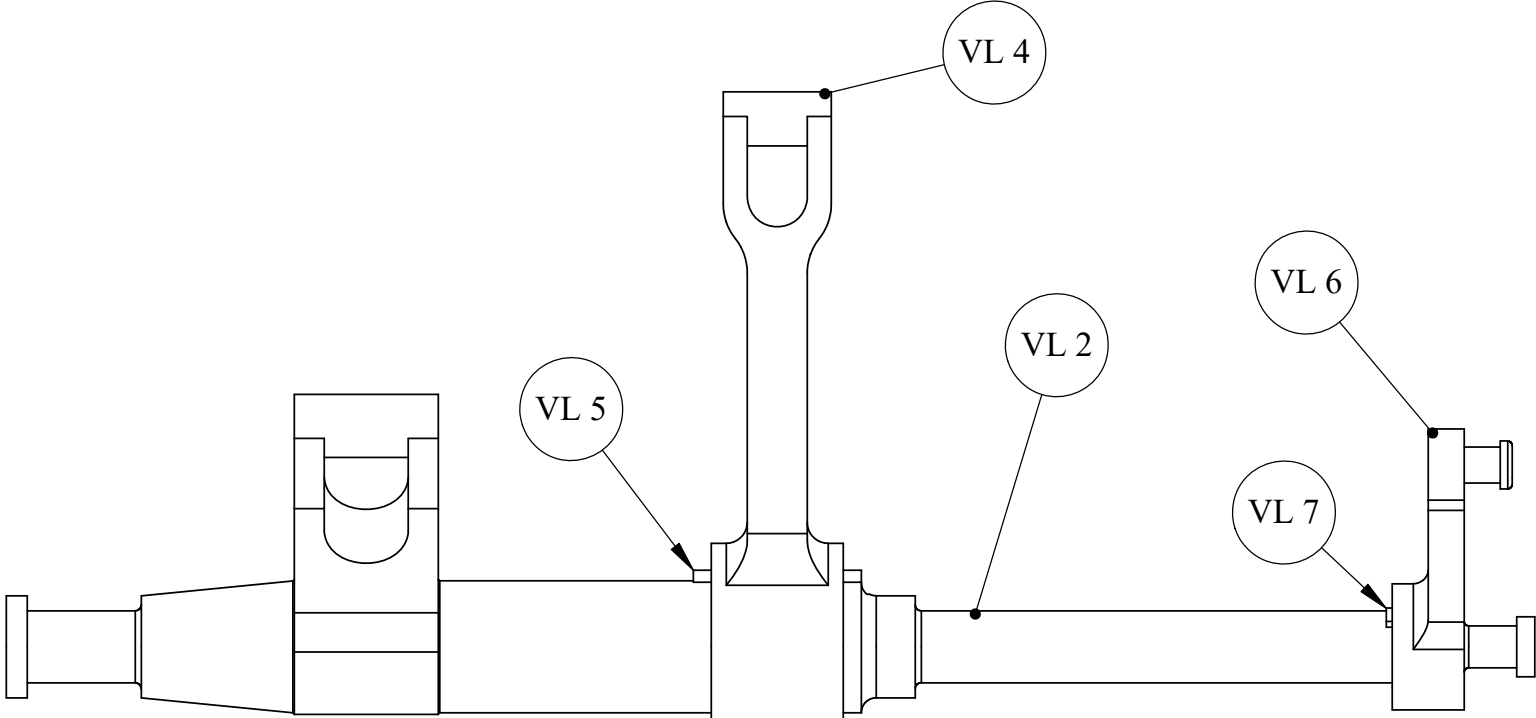
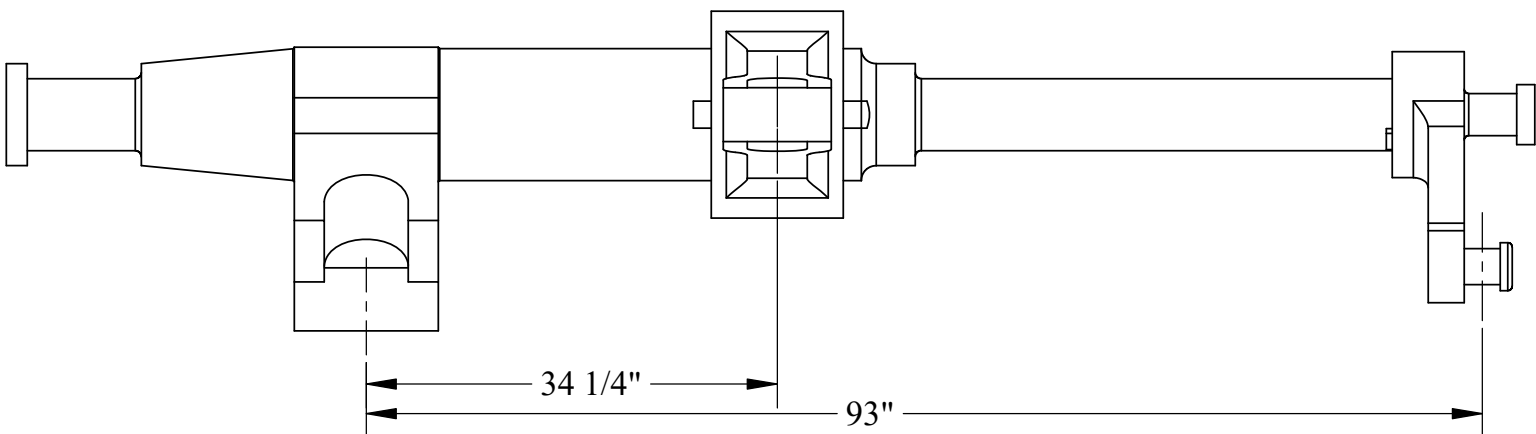
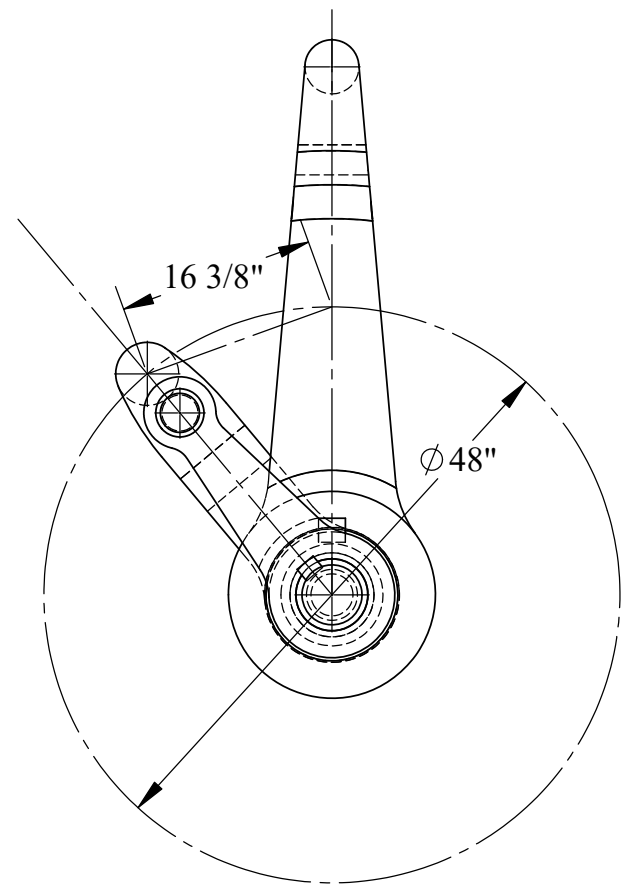
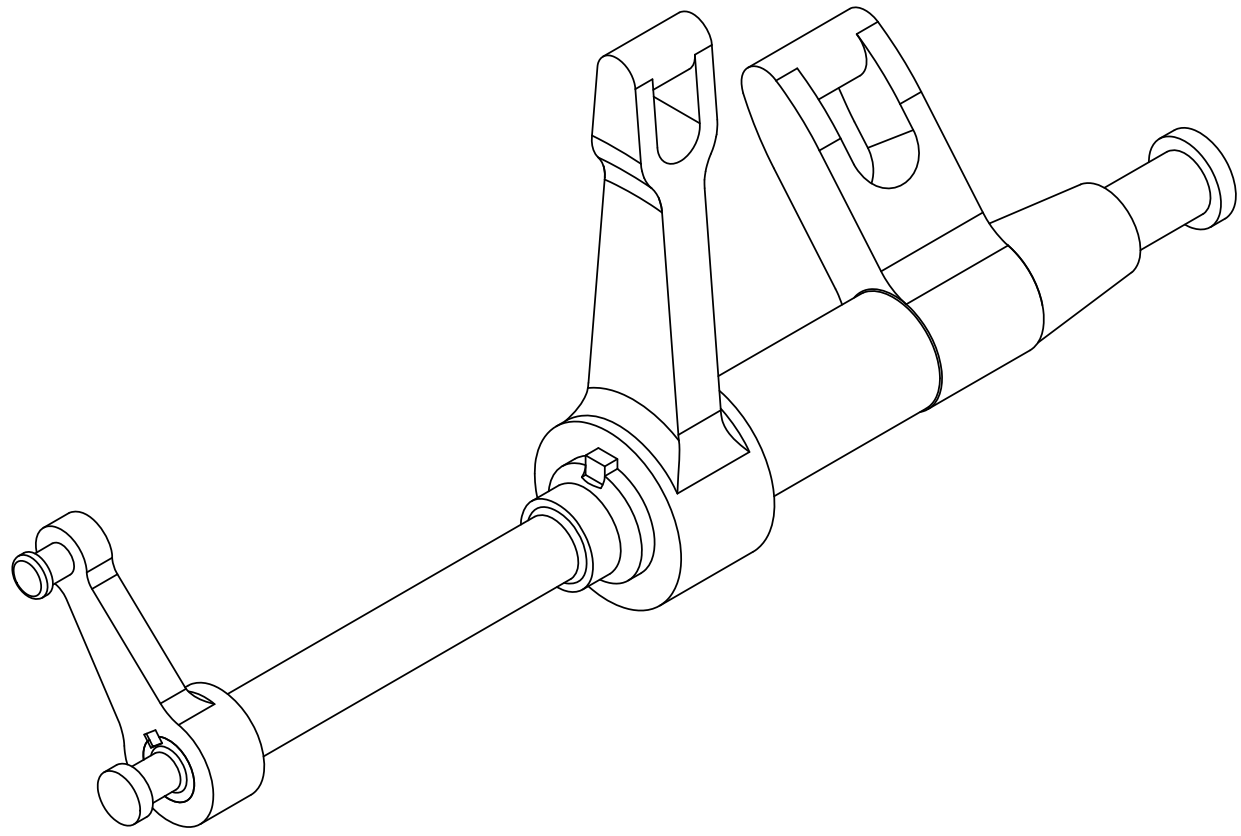


PART NUMBER	DESCRIPTION	QTY.
VL 2	Vibrating Lever "Rock" Shaft -Port	1
VL 4	Conecting Rod Lever	1
VL 5	Conecting Rod Lever Key	1
VL 6	Condenser Lever	1
VL 7	Condenser Lever Key	1



HEATED TO ASSEMBLE

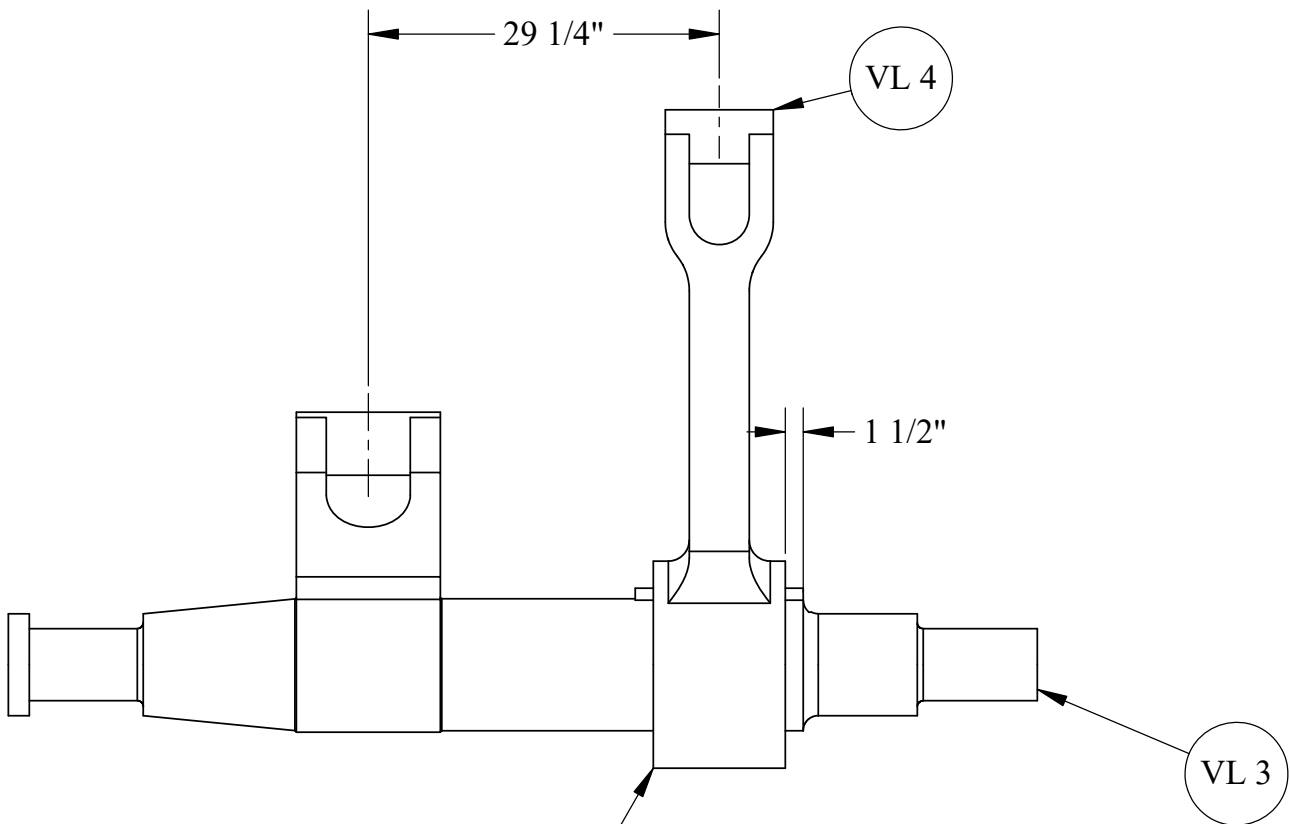
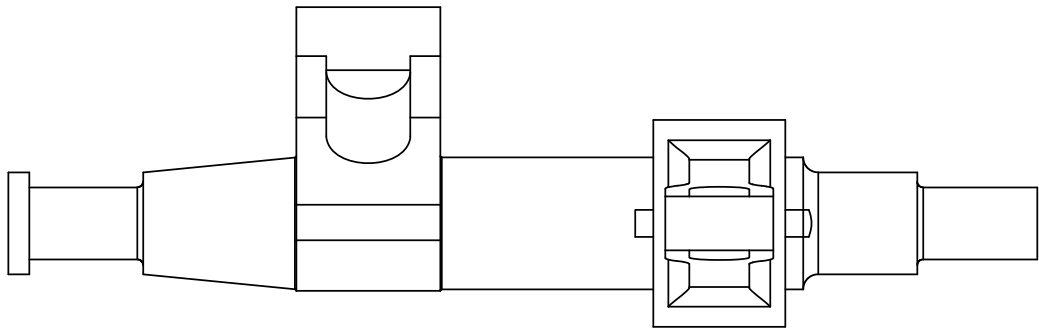


© 2018 R.W.Carlstedt

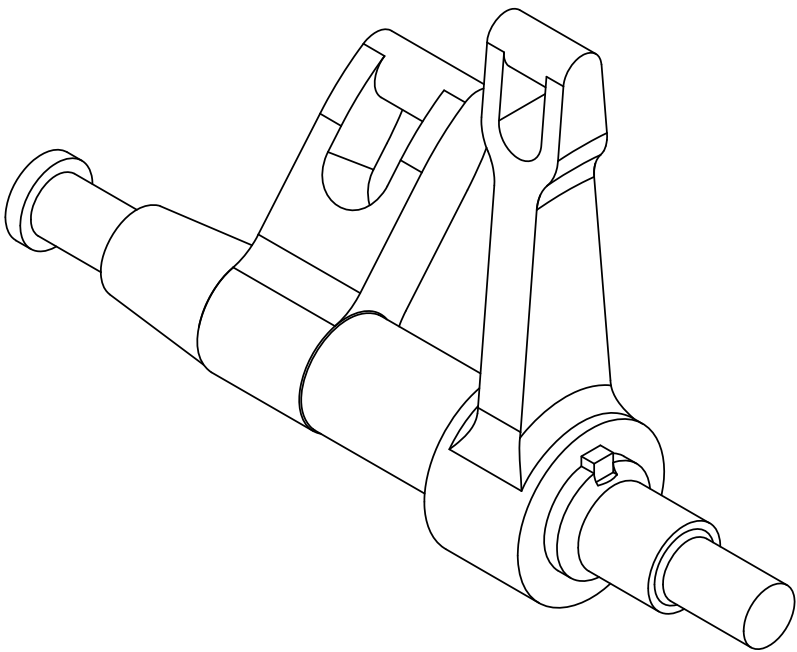
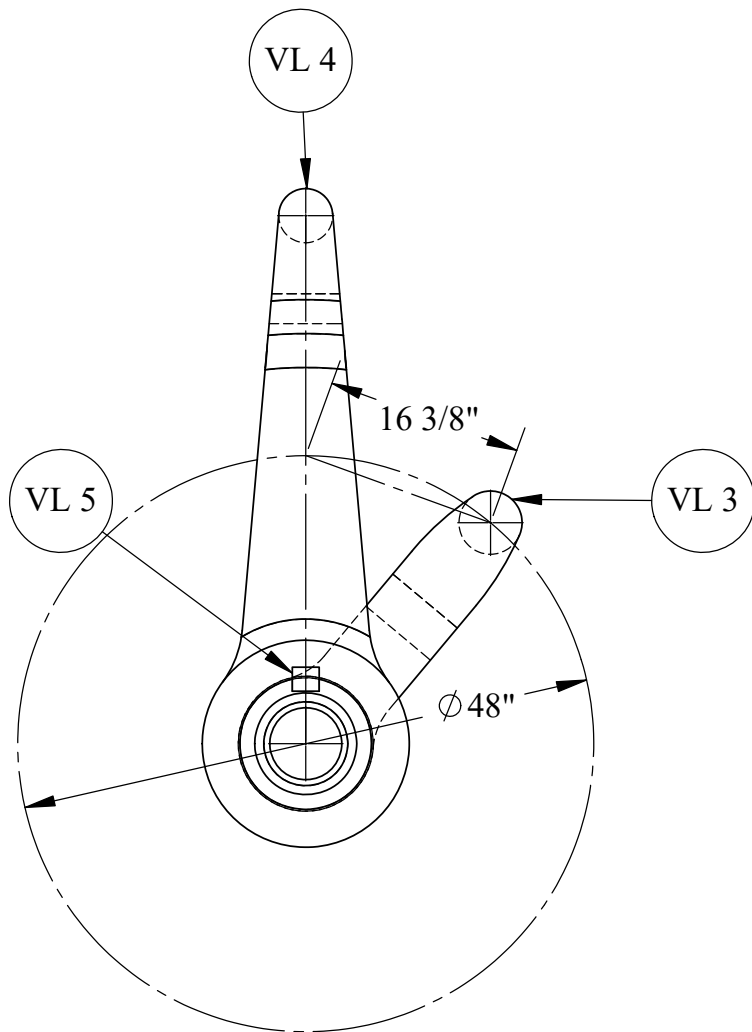
U.S.S. Monitor Steam Engine

Material	Drawn By - Date	Sub-Assembly
Weight (Lbs)	RWC 10-2018	Vibrating Lever
3547.90	Description	
Scale	Rock Shaft Assembly-Port	
1:16		
Part #		
VL 1-P		

PART NUMBER	DESCRIPTION	QTY.
VL 3	Vibrating Lever "Rock" Shaft - Starboard	1
VL 5	Conecting Rod Lever Key	1
VL 4	Conecting Rod Lever	1

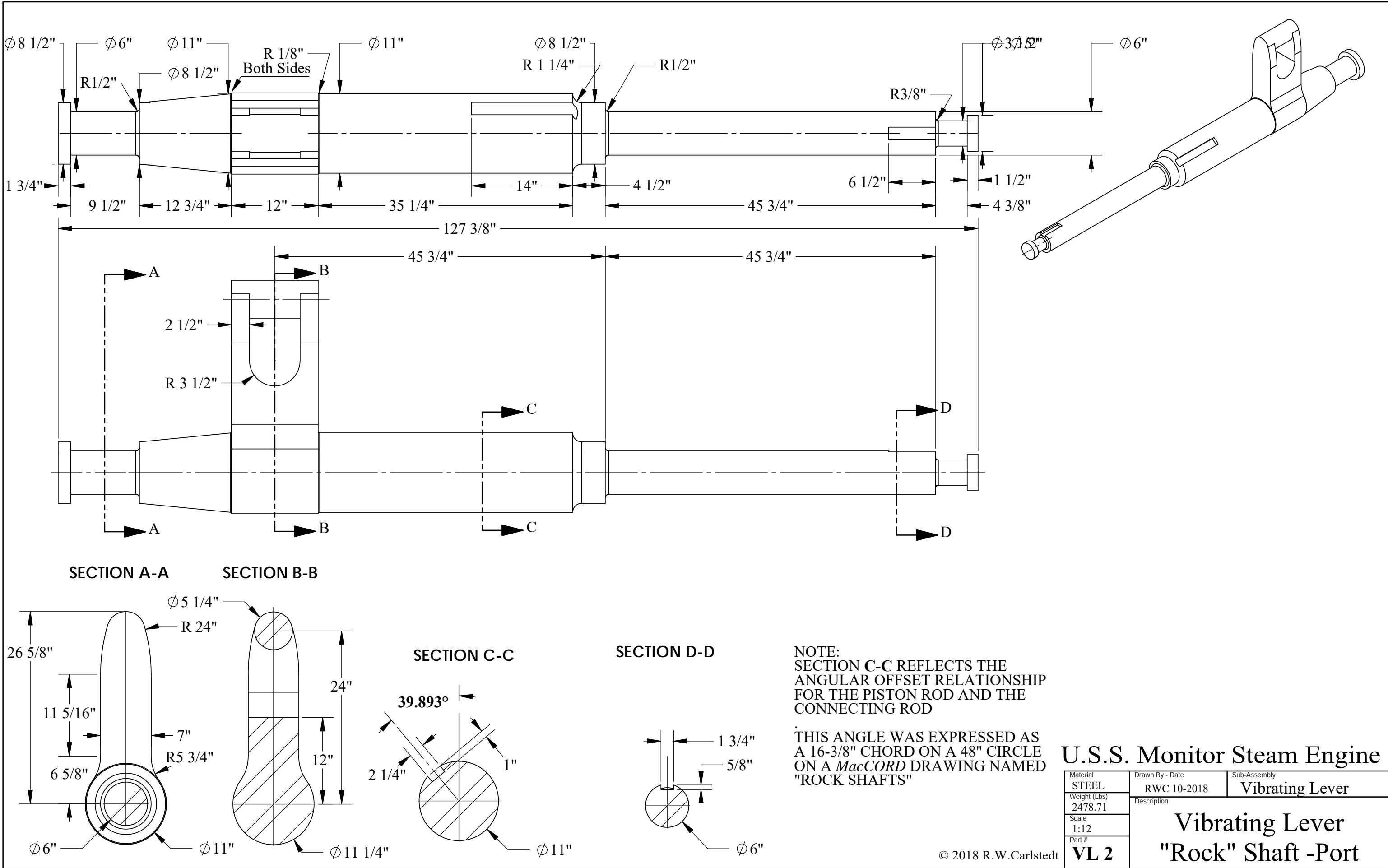


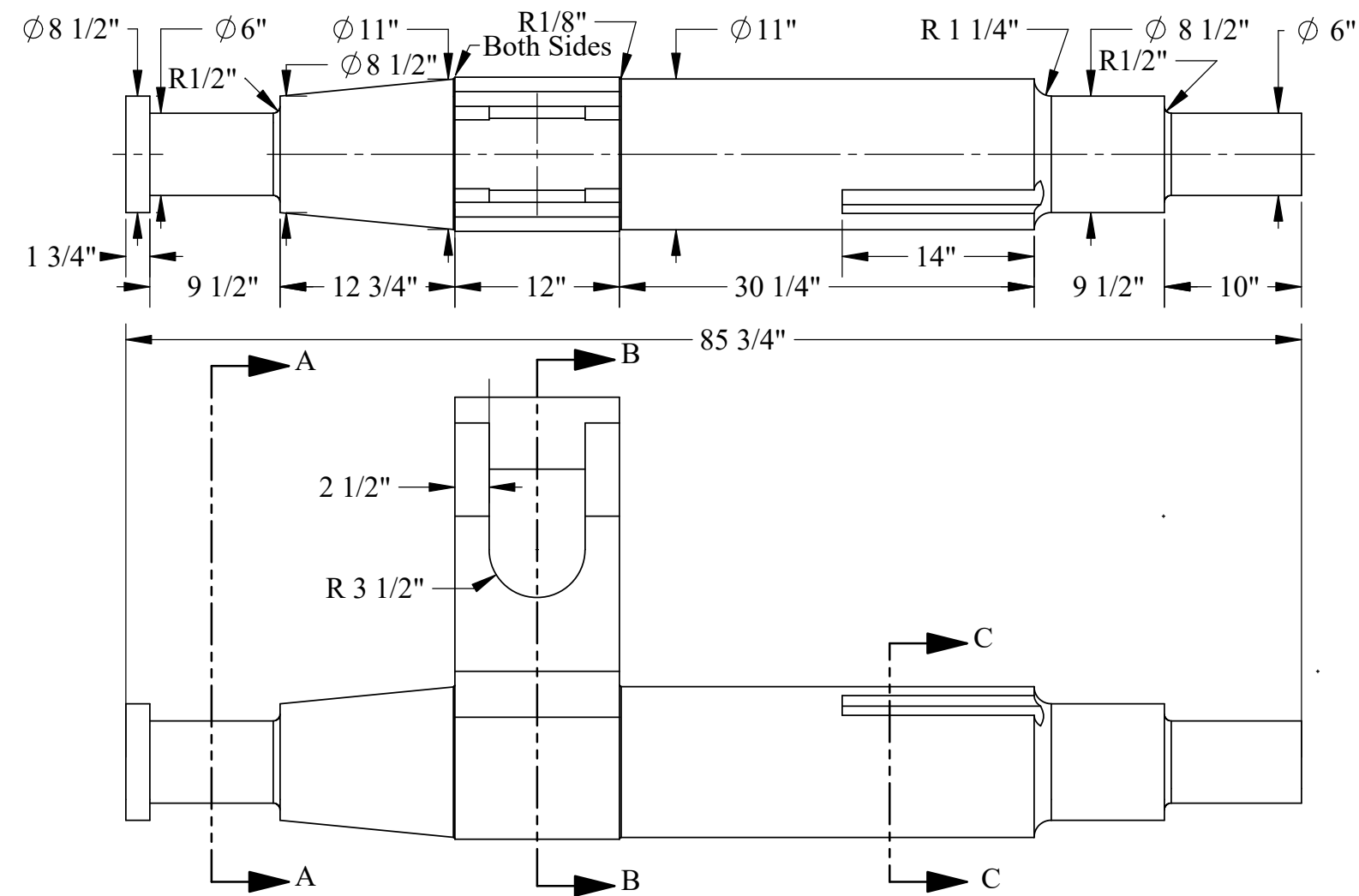
NOTE:
HEATED BEFORE ASSEMBLY



U.S.S. Monitor Steam Engine

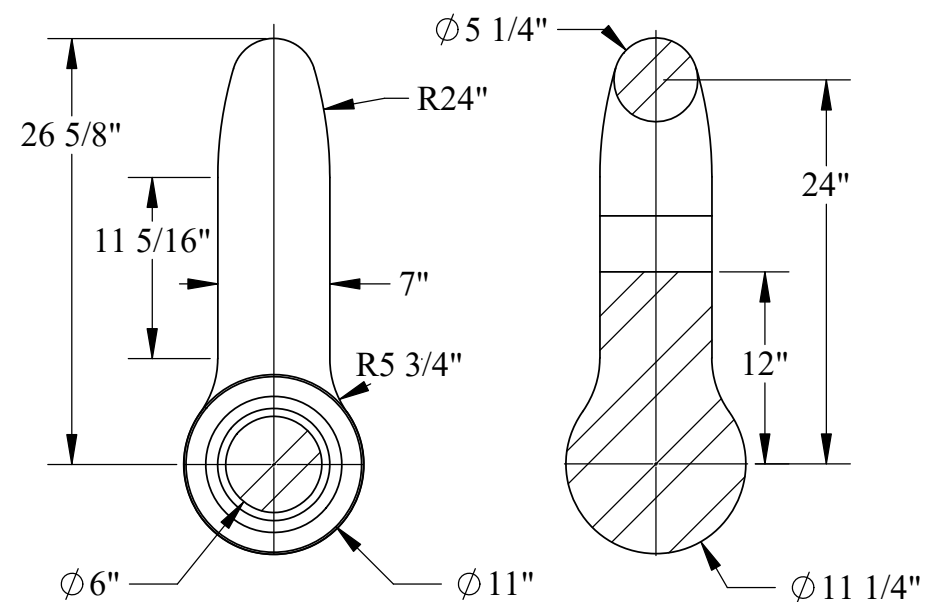
Material	Drawn By - Date	Sub-Assembly
Weight (Lbs)	RWC 10-2018	Vibrating Lever
2985.10	Description	
Scale		
1:16		
Part #		
VL 1-S		
		Rock Shaft Assembly- Starboard



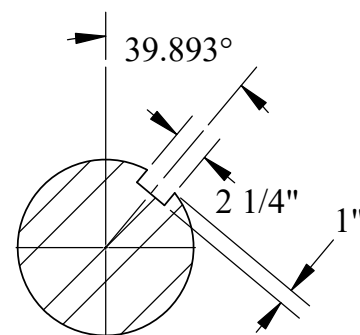


SECTION A-A

SECTION B-B



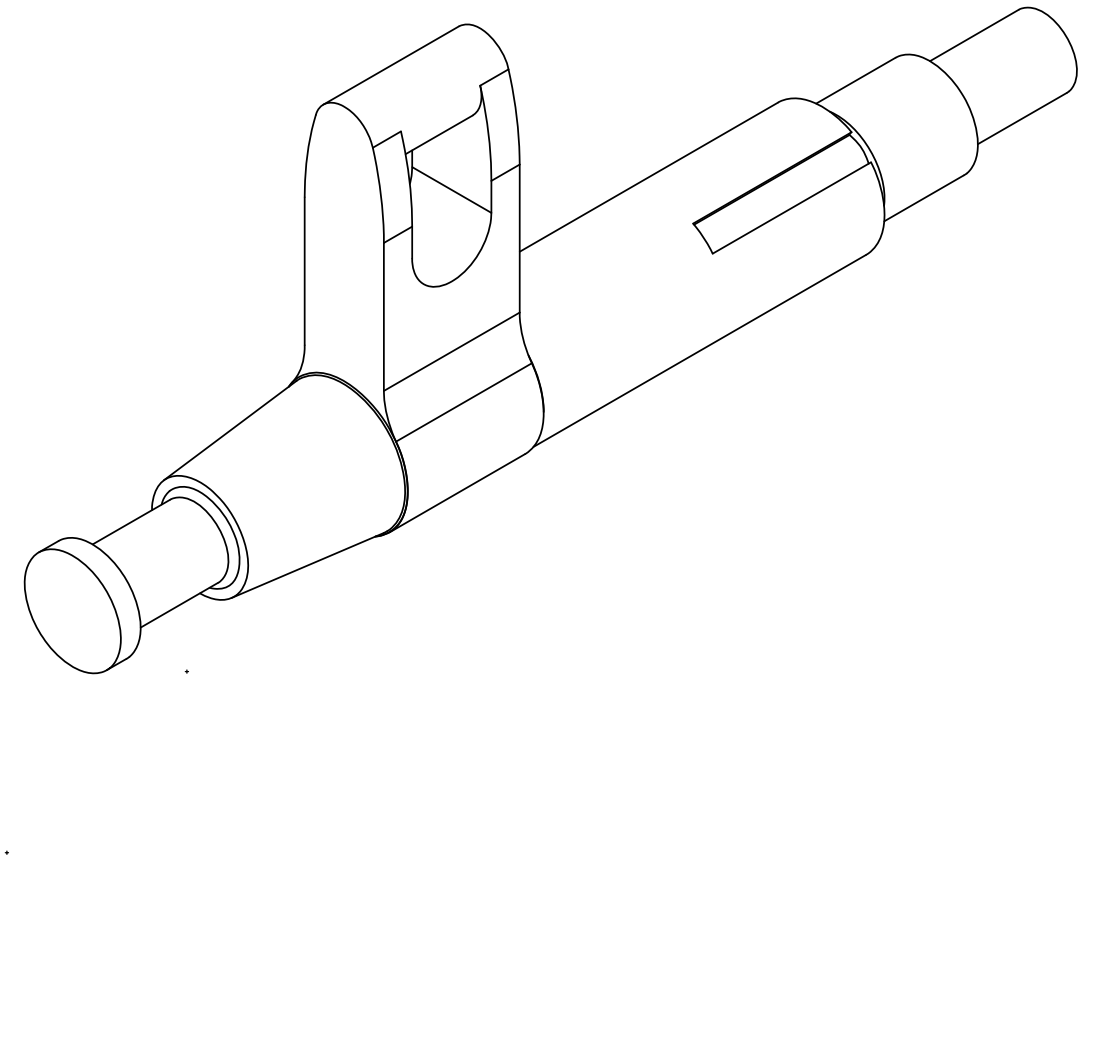
SECTION C-C



NOTE:
SECTION C-C REFLECTS THE
ANGULAR OFFSET RELATIONSHIP
FOR THE PISTON ROD AND THE
CONNECTING ROD

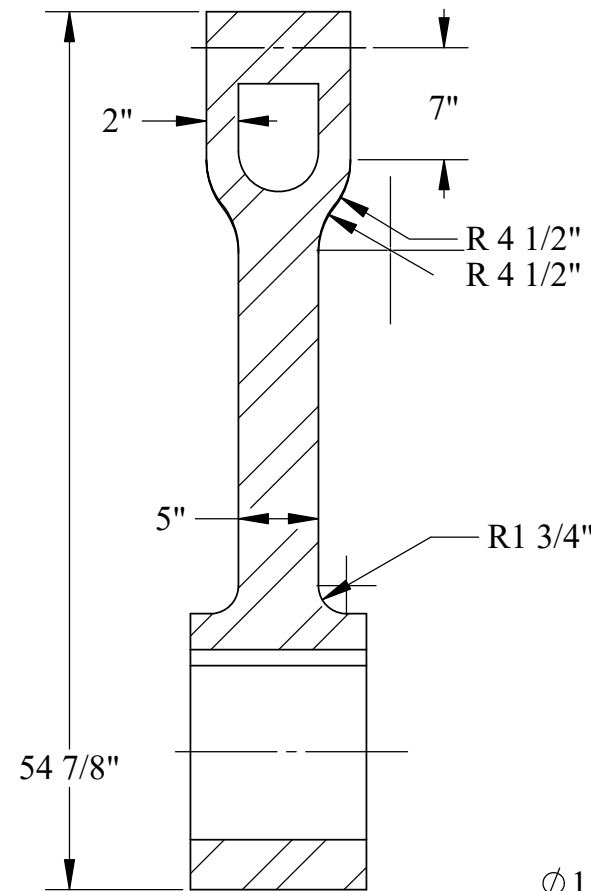
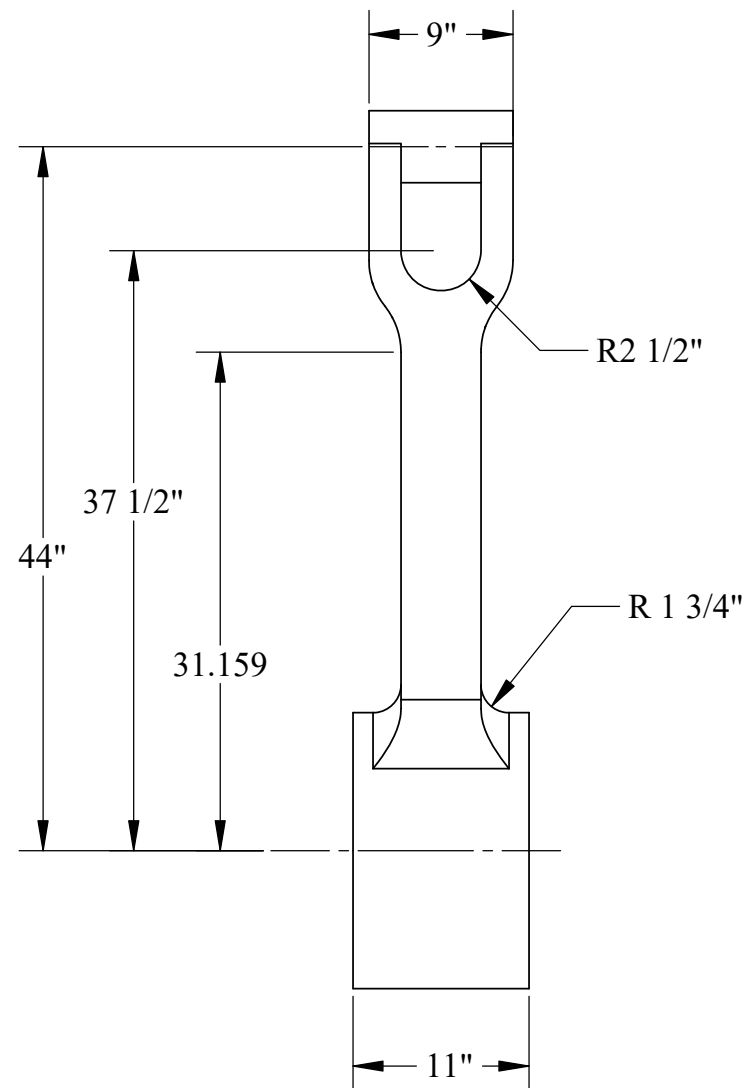
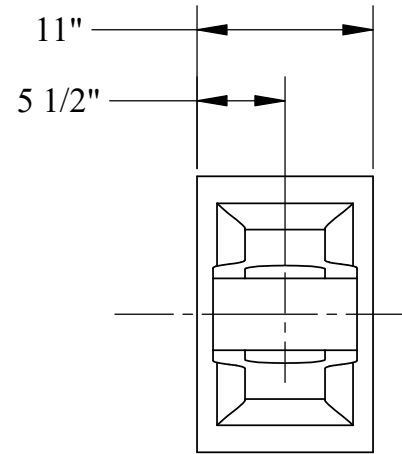
THIS ANGLE WAS EXPRESSED AS
A 16-3/8" CHORD ON A 48" CIRCLE
ON A *MacCORD* DRAWING NAMED
"ROCK SHAFTS"

© 2018 R.W.Carlstedt

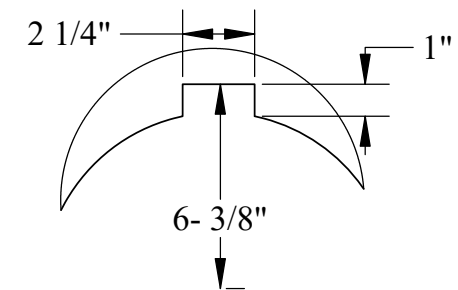
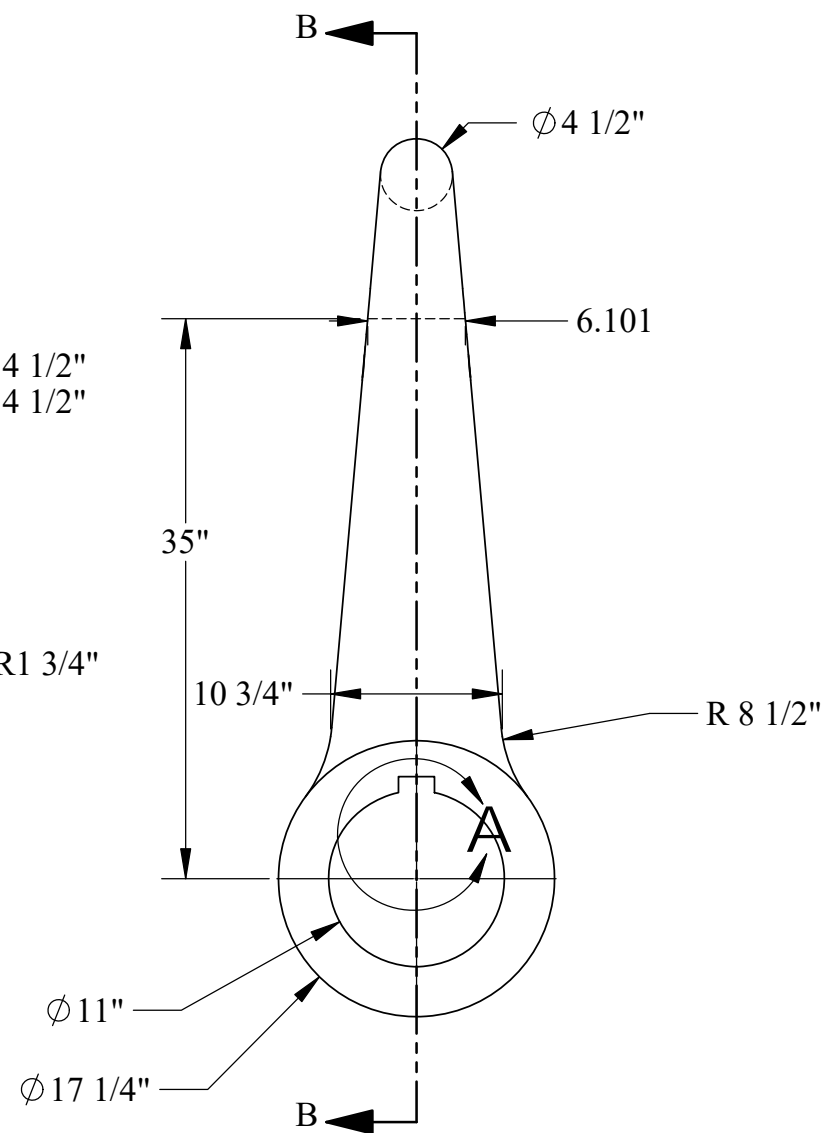


U.S.S. Monitor Steam Engine

Material STEEL	Drawn By - Date RWC 10-2018	Sub-Assembly Vibrating Lever
Weight (Lbs) 2117.37	Description Vibrating Lever "Rock" Shaft -Starboard	
Scale 1:12		
Part # VL 3		



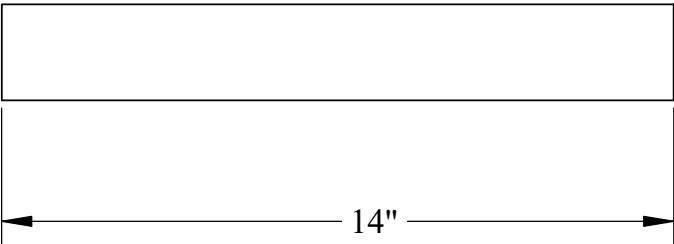
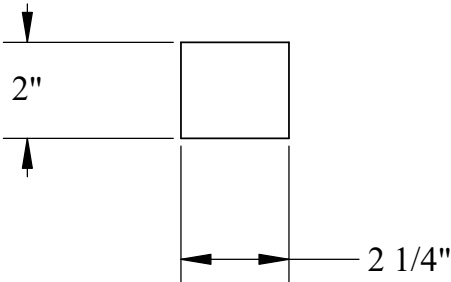
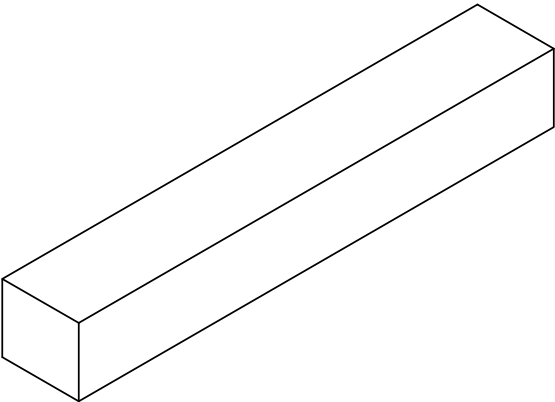
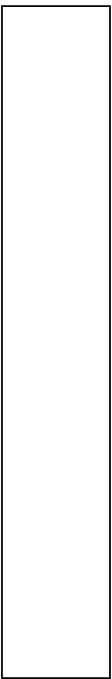
SECTION B-B
SCALE 1 : 12



DETAIL A
SCALE 1 : 6

U.S.S. Monitor Steam Engine

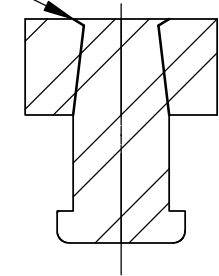
Material STEEL	Drawn By - Date RWC 10-2018	Sub-Assembly Vibrating Lever
Weight (Lbs) 859.75	Description Conecting Rod Lever	
Scale 1:12		
Part # VL 4		



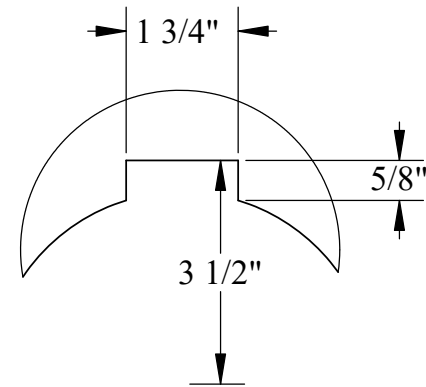
U.S.S. Monitor Steam Engine

Material STEEL	Drawn By - Date RWC 10-2018	Sub-Assembly Vibrating Lever
Weight (Lbs) 17.98	Conecting Rod Lever Key	
Scale 1:4		
Part # VL 5		

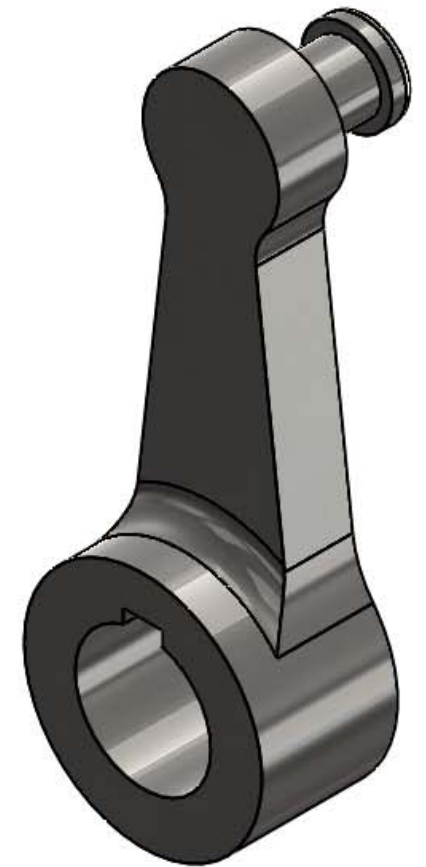
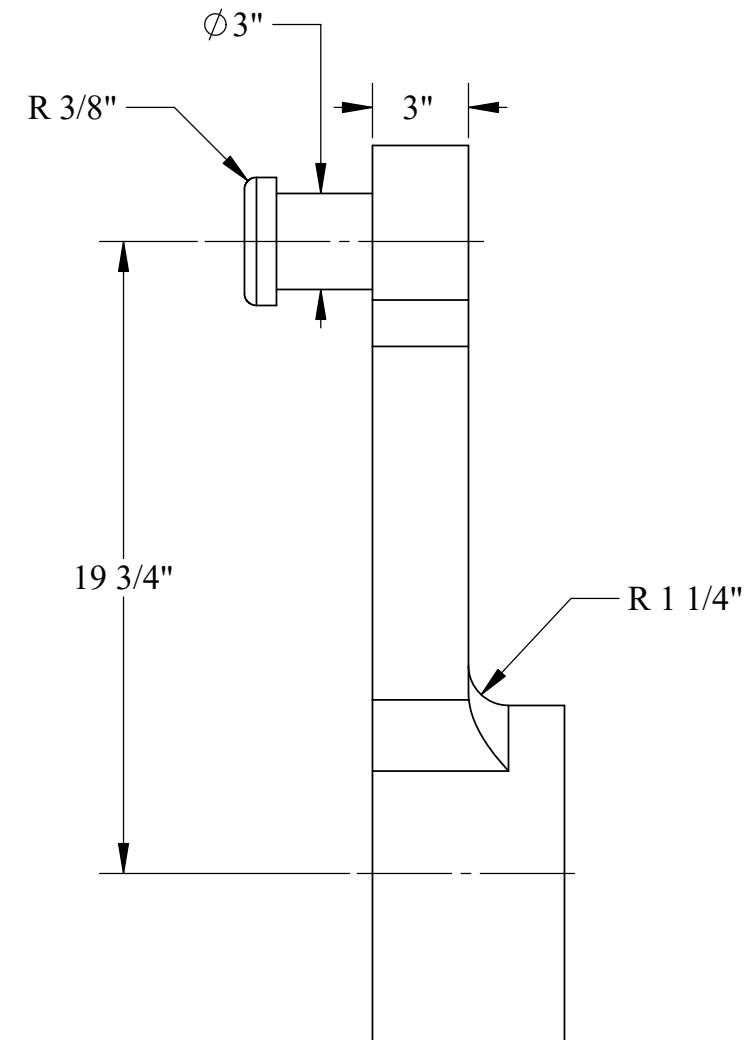
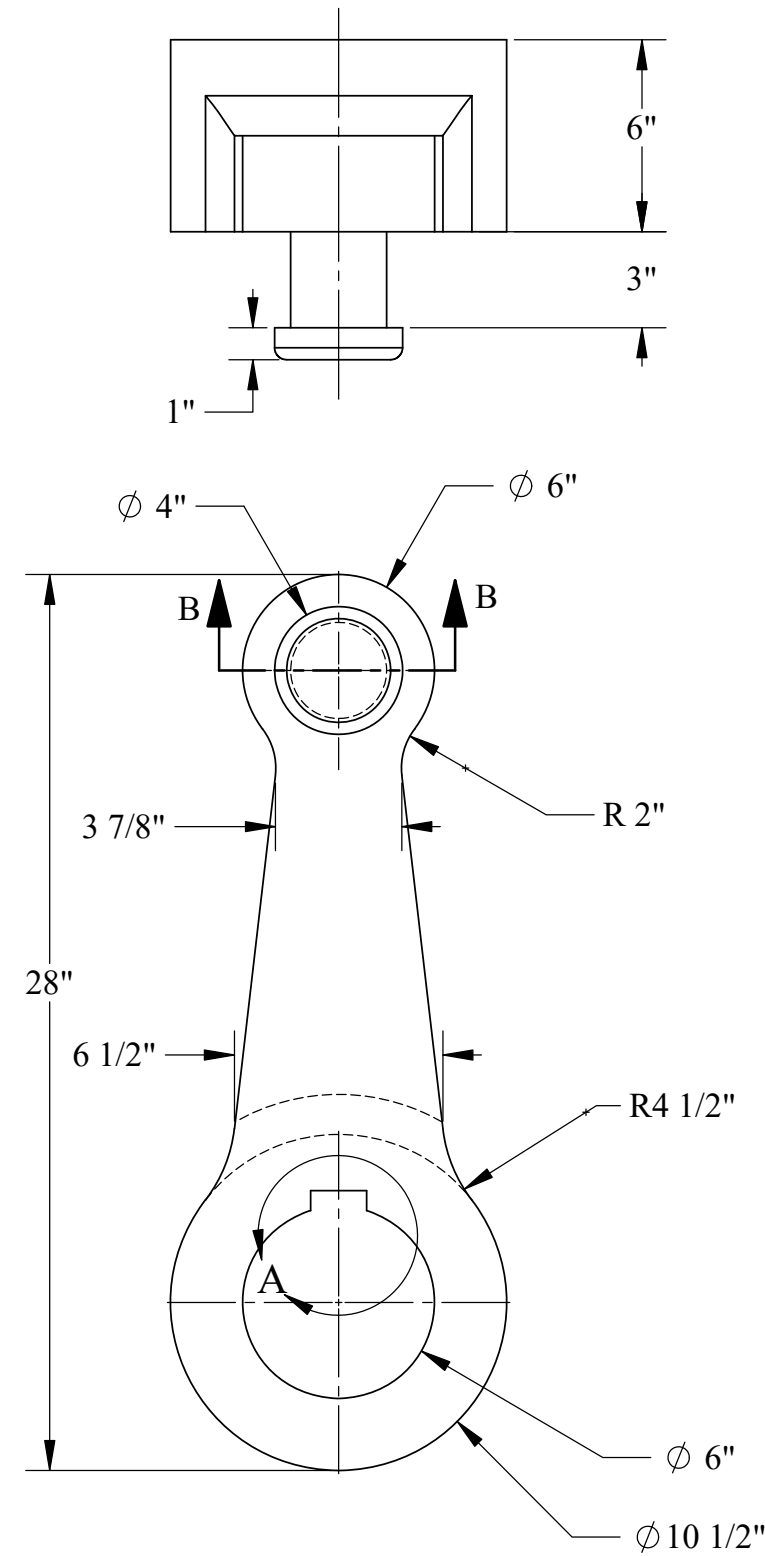
NOTE:
WHEN THIS LEVER WAS FABRICATED,
THE PIN WAS MACHINED AND
INSTALLED BY FORGING AND UPSETTING
THE END-
NO DETAILS FOUND FOR DIMENSIONS,
SO AN OUTLINE IS PROVIDED HERE



SECTION B-B

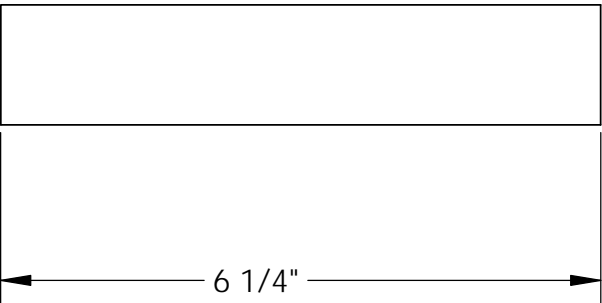
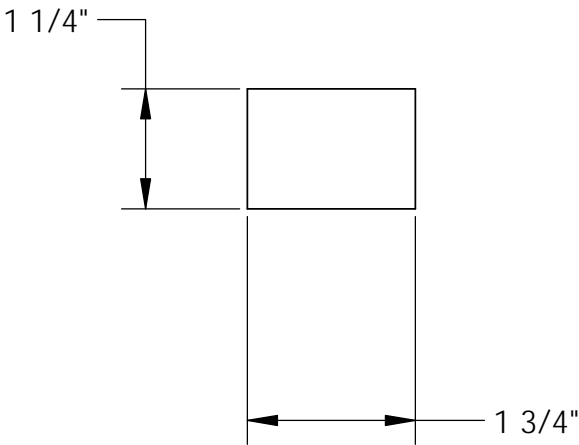
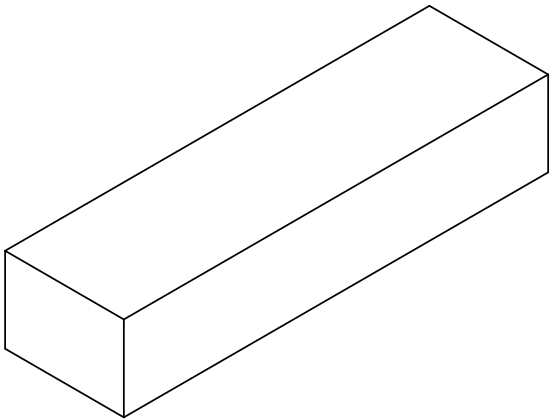
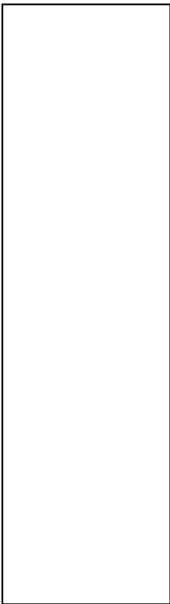


KEYWAY
DETAIL A
SCALE 1 : 3



U.S.S. Monitor Steam Engine

Material STEEL	Drawn By - Date RWC 12-2018	Sub-Assembly Vibrating Lever
Weight (Lbs) 187.56	Description Condenser Lever	
Scale 1:6		
Part # VL 6		



U.S.S. Monitor Steam Engine

Material STEEL	Drawn By - Date RWC 10-2018	Sub-Assembly Vibrating Lever
Weight (Lbs) 3.90	Description Condenser Lever Key	
Scale 1:2		
Part # VL 7		